

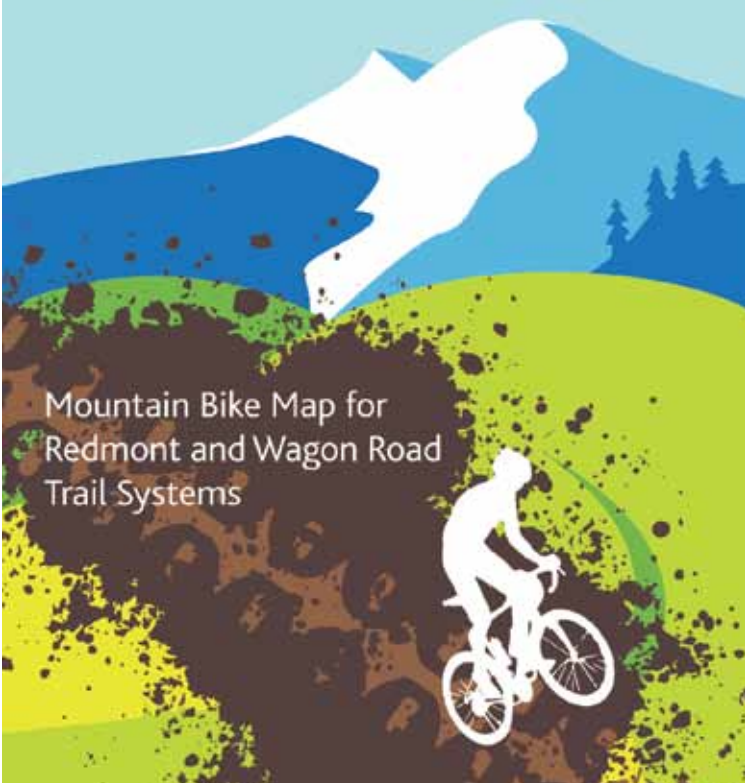
Please Ride Responsibly!

1. Respect trail and road closures. Bicycles are not permitted in federal Wilderness.
2. Stay on existing trails. Wet and muddy trails are more vulnerable to damage than dry ones. When the trail is soft, consider other riding options.
3. Control your bicycle; ride within your limits.
4. Bicyclists should yield to all other trail users. Bicyclists traveling downhill should yield to ones headed uphill. Alert fellow trail users to your presence.
5. Never scare animals. Give animals enough room and time to adjust to you. When passing horses, approach slowly and follow directions from the horseback riders (ask if uncertain). Move off trail to the down-slope side when there is not enough room to pass horses or cattle. Running cattle and disturbing wildlife are serious offenses.
6. Carry enough water.
7. Keep your equipment in good repair and carry necessary supplies.
8. Be prepared for changes in weather and trail conditions.
9. Always wear a helmet and appropriate safety gear.

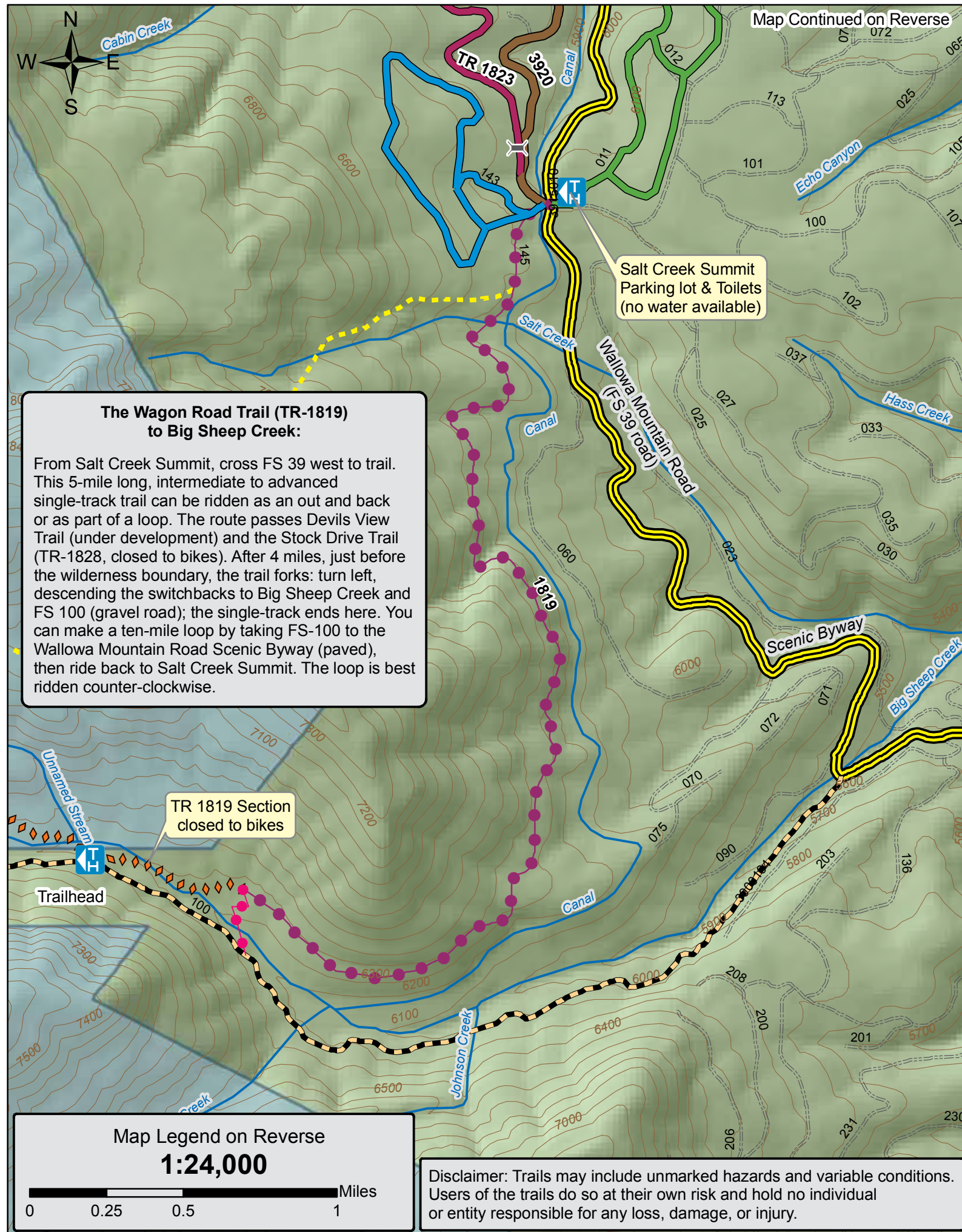


This project is made possible by a grant from the Oregon Tourism Commission.

**Mountain Biking
Wallowa County**



Mountain Bike Map for
Redmont and Wagon Road
Trail Systems



The Redmont and Wagon Road Trail Network

The trails lie mostly within the Wallowa-Whitman National Forest; the northern end of the Redmont Trail intersects sections of private land. All routes travel through forested terrain, with several breaks that reveal wonderful views of the Wallowa and Seven Devils mountain ranges. Trails are marked with blue diamonds, road number signs, and trail number signs. Riding season is typically mid-June to the end of October, depending on snow coverage. Annual trail clearing is usually completed by early July. All trails are multi-use; non single-track trails include motorized use.

Trailheads (see map, reverse page):

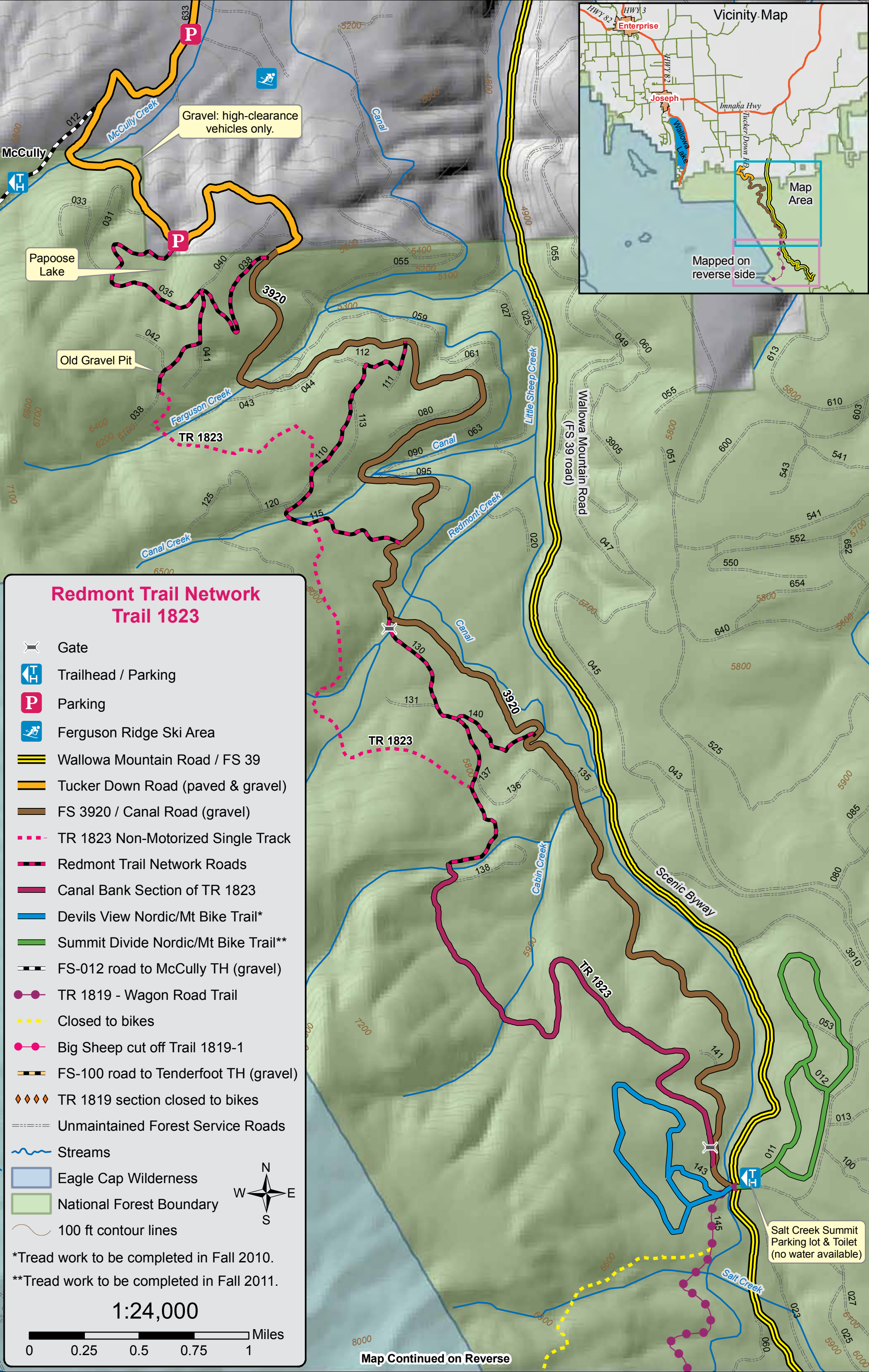
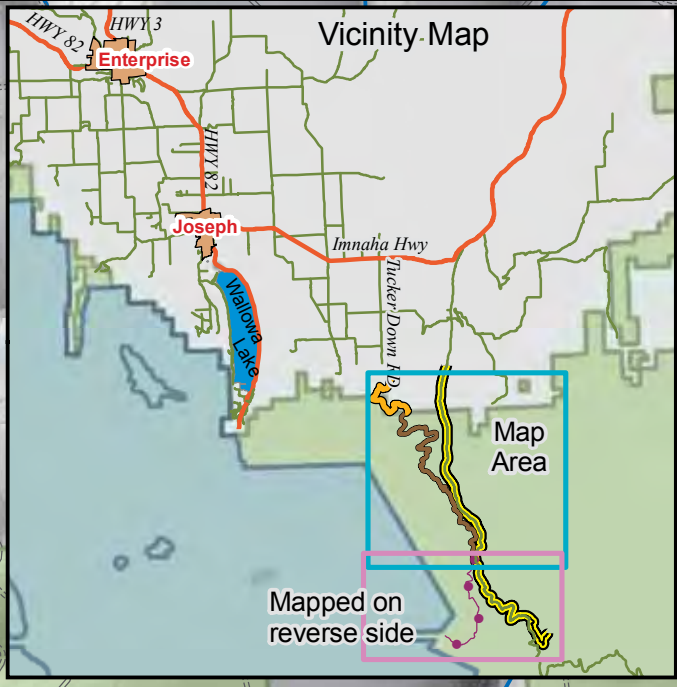
Ferguson Ridge Snow Park (north end): 14 miles from Joseph. High clearance vehicles only after turn-off to McCully trailhead. No facilities; nearest toilet is at McCully trailhead.

Salt Creek Summit (south end): 19 miles from Joseph Facilities include pit toilets and sheltered public building; no water.

Redmont Trail (TR 1823) Network (Reverse Page):

The Redmont Trail Network offers the region's best single-track trails, and includes routes suitable for beginners as well as advanced riders. The Network's north trailhead lies just past the Ferguson Ridge Snow Park; the south trailhead lies at Salt Creek Summit. Choose between several loops ranging from 7 to 20 miles or more, or ride from one end of the trail to the other, approximately 10 miles (shuttle required). In general, the more advanced riding lies in the north section, intermediate trails in the middle section, and mostly flat, beginner terrain in the south section of the Network. The Canal Road (FS 3920) offers beginner terrain throughout the Network, which enables groups of varying abilities to reconnect frequently during their ride. The single-track portions can be narrow and brushy, but are not particularly steep or technical. All other sections are dirt or gravel roads with varying degrees of maintenance. Many of these roads allow motorized use.

This map was created in cooperation with Northeast Oregon Economic Development District, Wallowa Resources, Wallowa County Chamber, Wallowa County GIS, Pacific Power, and the Eagle Cap Nordic Club. Trail clearing and maintenance provided by: Eagle Cap Nordic Club, Wallowa-Whitman National Forest Fire and Recreation Departments, Wallowa County Youth crews, Eastern Oregon Equestrian Club, and volunteers from Cycle Oregon and IMBA.

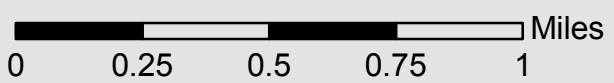


Redmont Trail Network Trail 1823

- Gate
- Trailhead / Parking
- Parking
- Ferguson Ridge Ski Area
- Wallowa Mountain Road / FS 39
- Tucker Down Road (paved & gravel)
- FS 3920 / Canal Road (gravel)
- TR 1823 Non-Motorized Single Track
- Redmont Trail Network Roads
- Canal Bank Section of TR 1823
- Devils View Nordic/Mt Bike Trail*
- Summit Divide Nordic/Mt Bike Trail**
- FS-012 road to McCully TH (gravel)
- TR 1819 - Wagon Road Trail
- Closed to bikes
- Big Sheep cut off Trail 1819-1
- FS-100 road to Tenderfoot TH (gravel)
- TR 1819 section closed to bikes
- Unmaintained Forest Service Roads
- Streams
- Eagle Cap Wilderness
- National Forest Boundary
- 100 ft contour lines

*Tread work to be completed in Fall 2010.
 **Tread work to be completed in Fall 2011.

1:24,000



Salt Creek Summit
 Parking lot & Toilet
 (no water available)

Map Continued on Reverse